

Unable to Use Key File OpenSSH SSH-2 Private Key (Old PEM Format)

Written by BiRU
Saturday, 26 July 2025 08:46 -

Zoom image will be displayed



Table of Contents

Unable to Use Key File OpenSSH SSH-2 Private Key

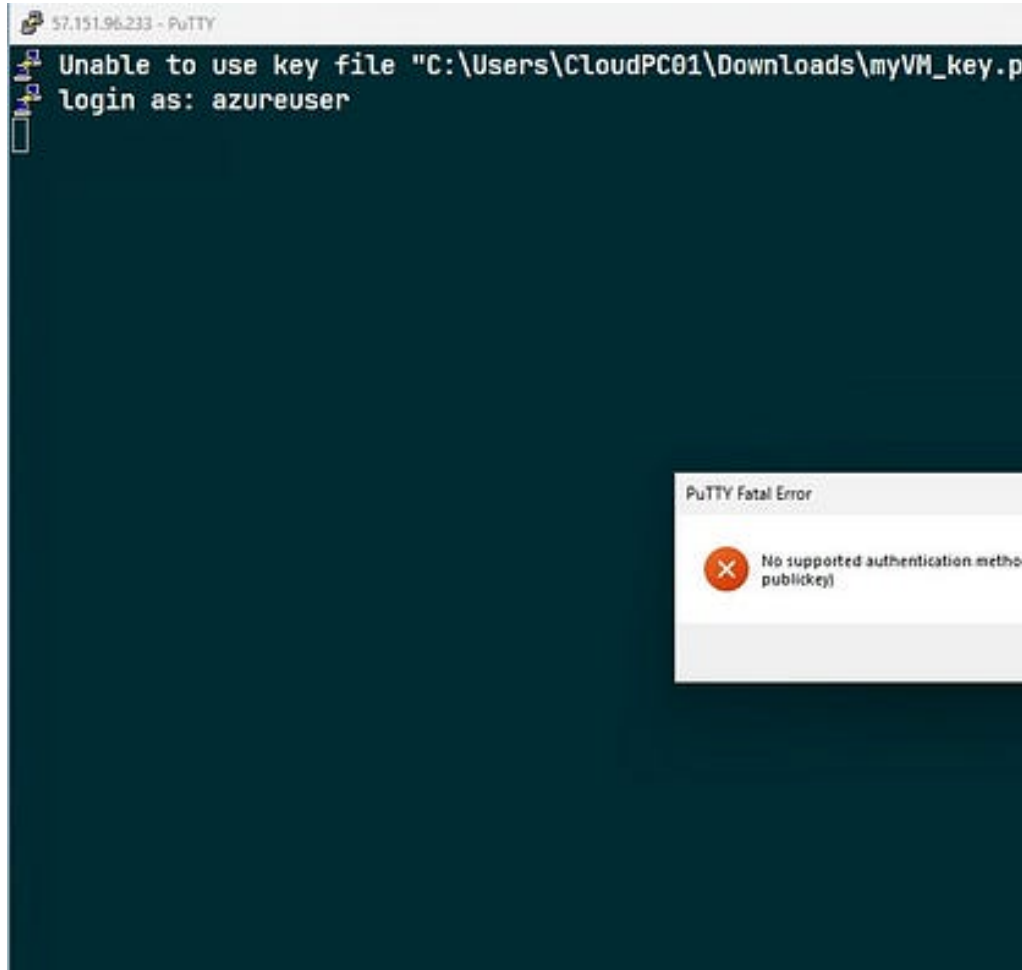
In some cases, you get the following error when trying to connect to a Linux system using PuTTY with private key authentication.

Unable to Use Key File OpenSSH SSH-2 Private Key (Old PEM Format)

Written by BiRU

Saturday, 26 July 2025 08:46 -

Zoom image will be displayed



You got this because you use a private key with OpenSSH format. To fix it, you need to convert the OpenSSH private key to PuTTY format.

1. Visit the PuTTY official website then download the PuTTYGen.

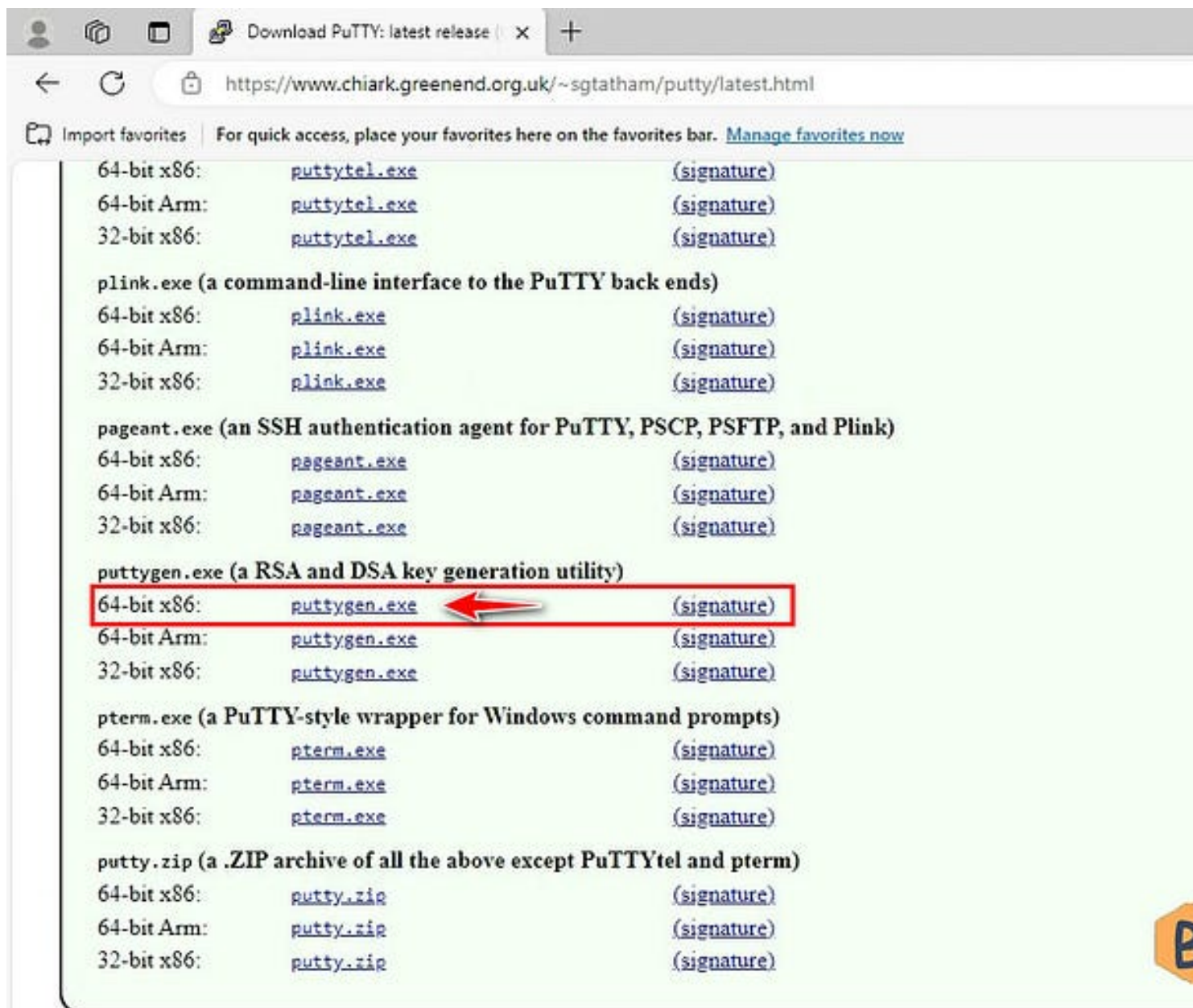
Download: <https://www.chiark.greenend.org.uk/~sgtatham/putty/latest.html>

Zoom image will be displayed

Unable to Use Key File OpenSSH SSH-2 Private Key (Old PEM Format)

Written by BiRU

Saturday, 26 July 2025 08:46 -



2. Open the downloaded file to run the PuTTY Key Generator.

Get bonguides.com's stories in your inbox

Join Medium for free to get updates from this writer.

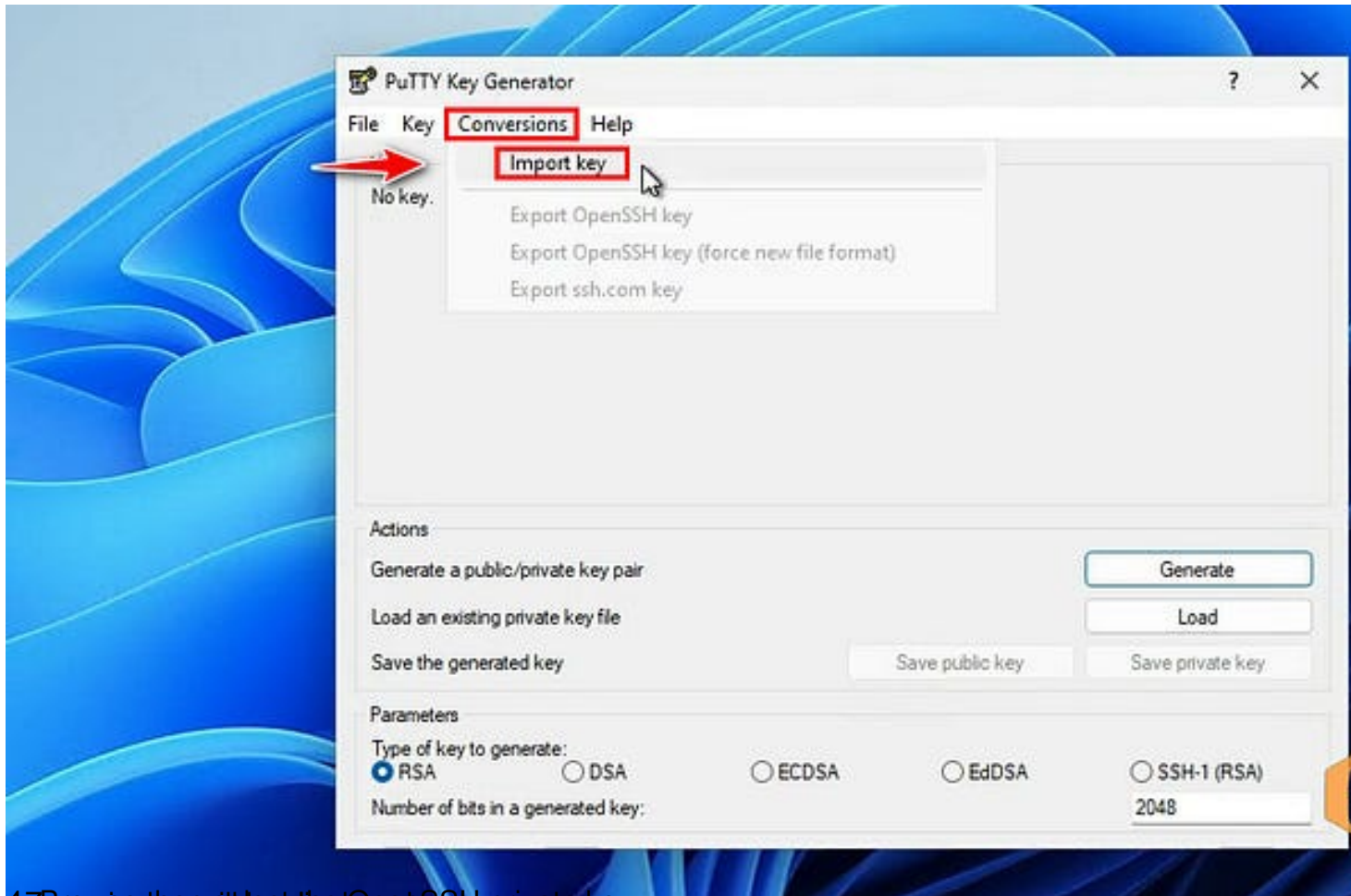
3. Go to **Conversions | Import key**.

Zoom image will be displayed

Unable to Use Key File OpenSSH SSH-2 Private Key (Old PEM Format)

Written by BiRU

Saturday, 26 July 2025 08:46 -

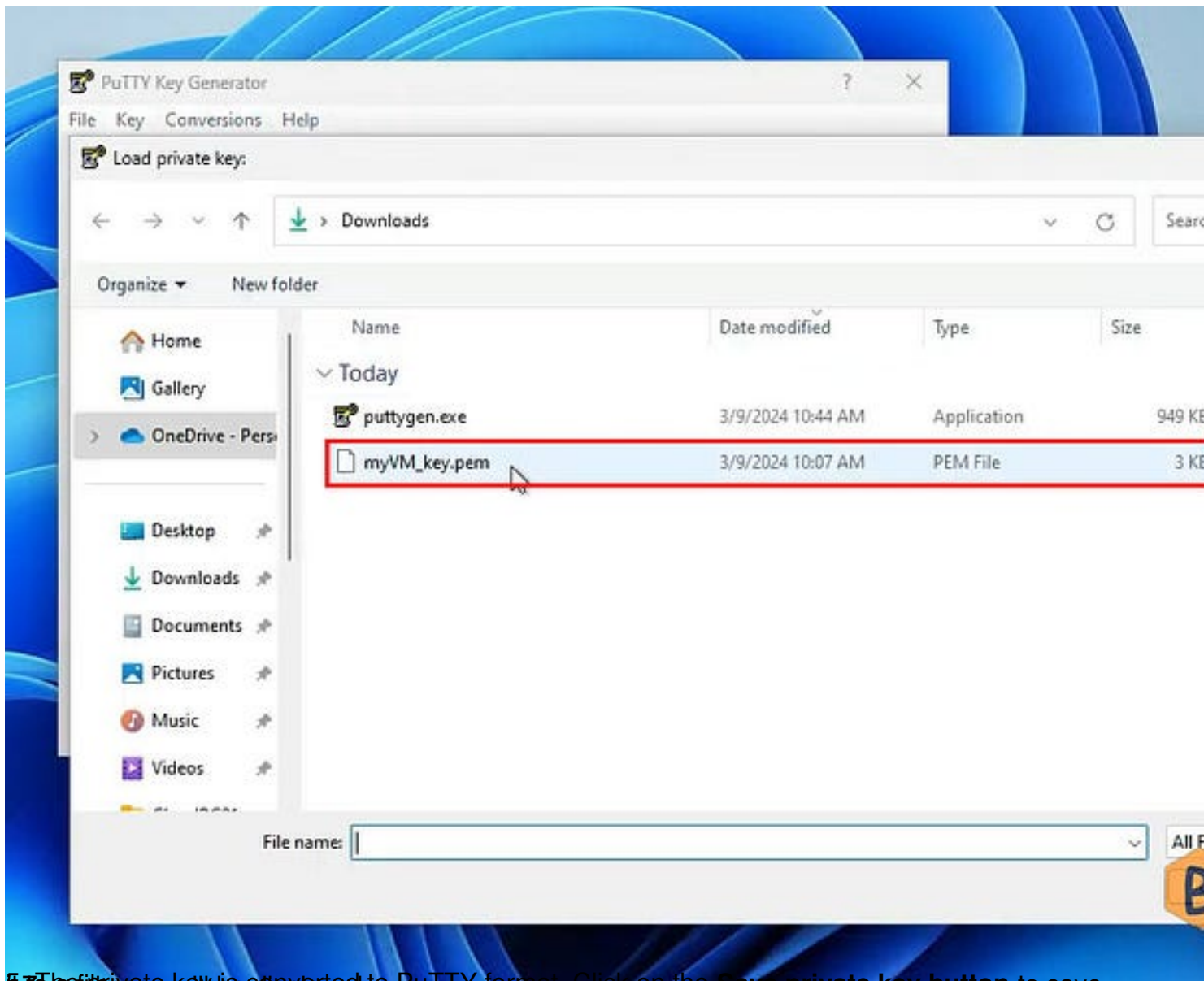


4. Browse the file to select your OpenSSH private key.

Unable to Use Key File OpenSSH SSH-2 Private Key (Old PEM Format)

Written by BiRU

Saturday, 26 July 2025 08:46 -

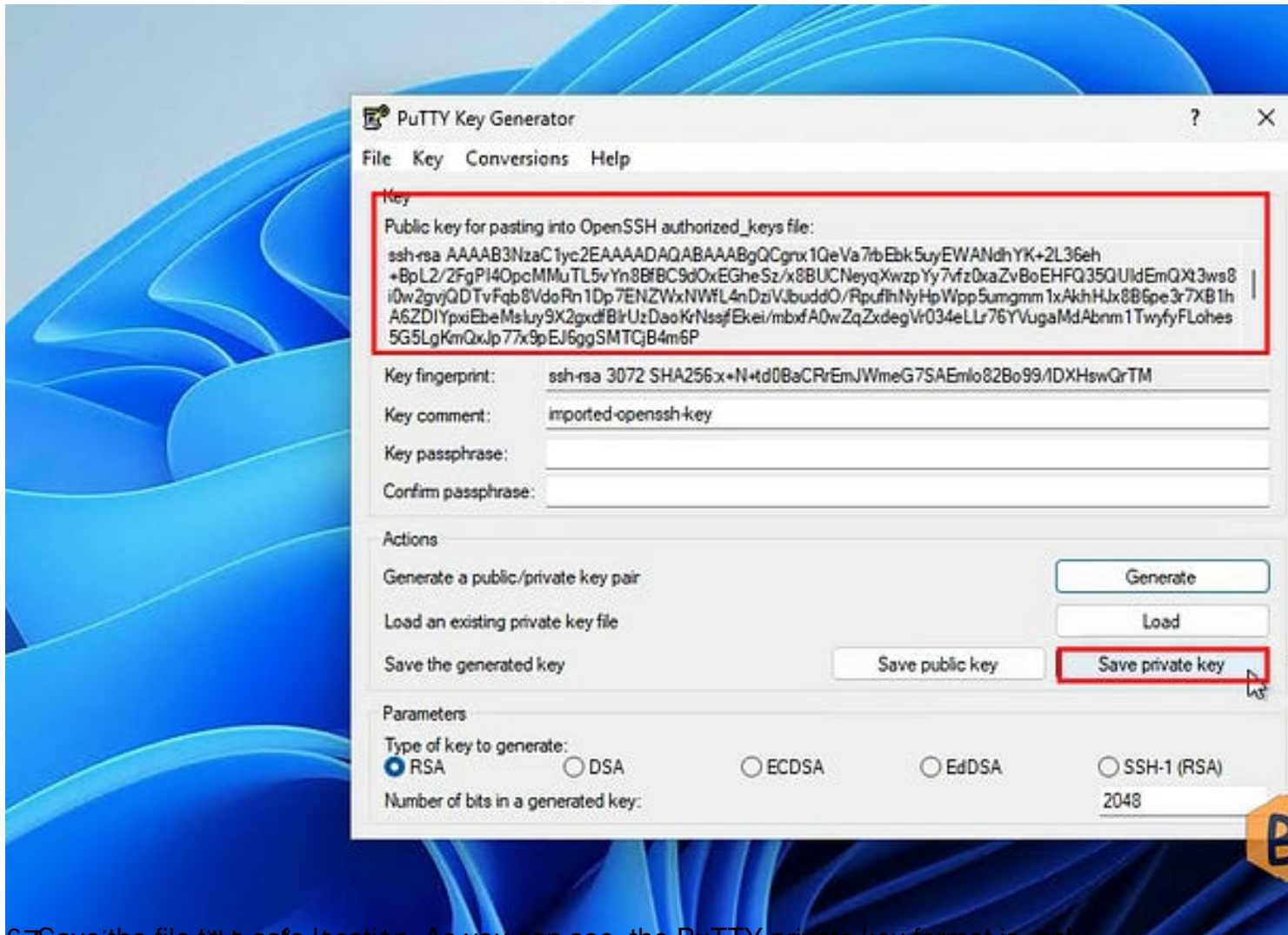


5. The private key is converted to PuTTY format. Click on the **Save private key button** to save the private key to a file.

Unable to Use Key File OpenSSH SSH-2 Private Key (Old PEM Format)

Written by BiRU

Saturday, 26 July 2025 08:46 -

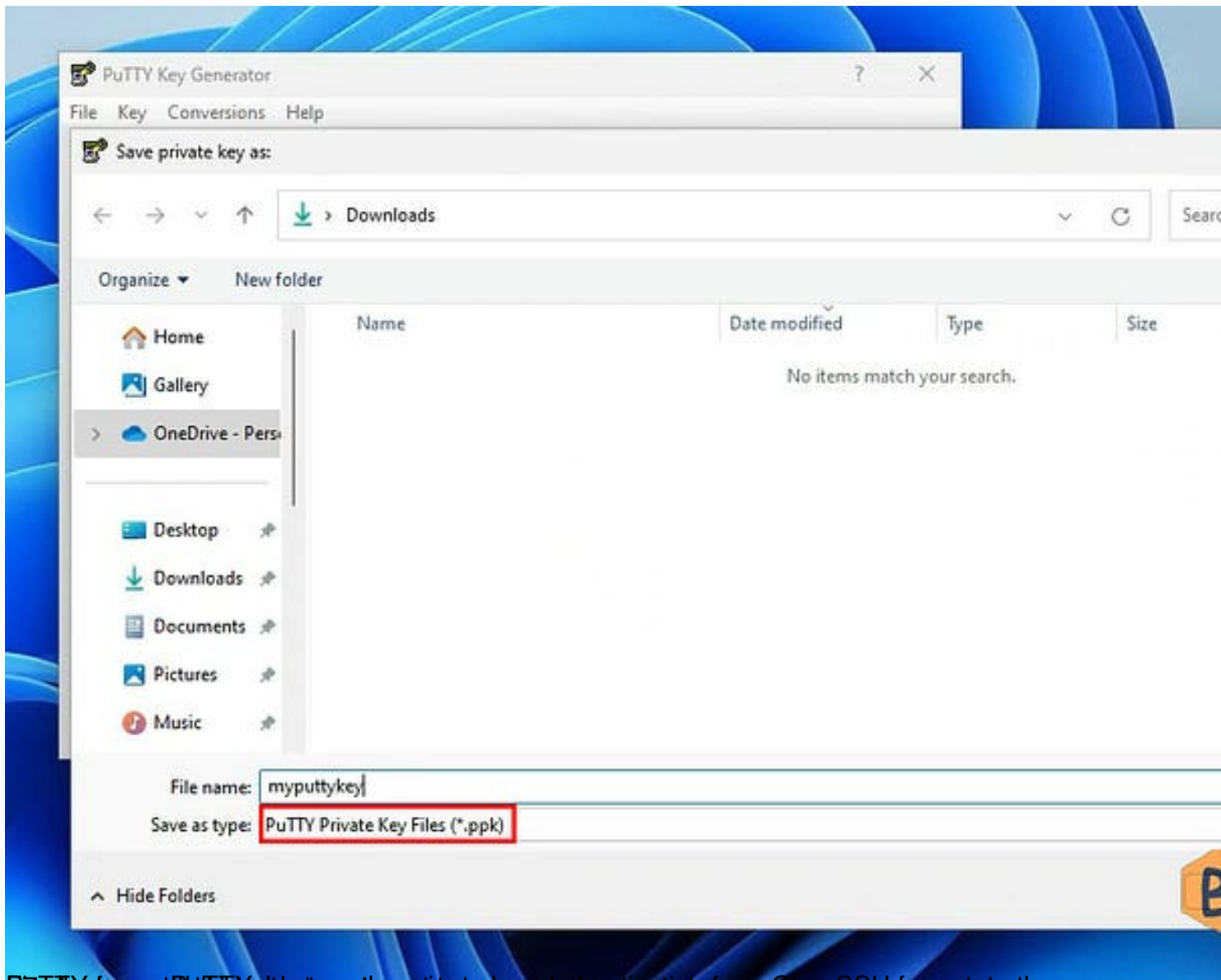


6. Save the file with a safe location. As you can see, the PuTTY private key format is .ppk.

Unable to Use Key File OpenSSH SSH-2 Private Key (Old PEM Format)

Written by BiRU

Saturday, 26 July 2025 08:46 -

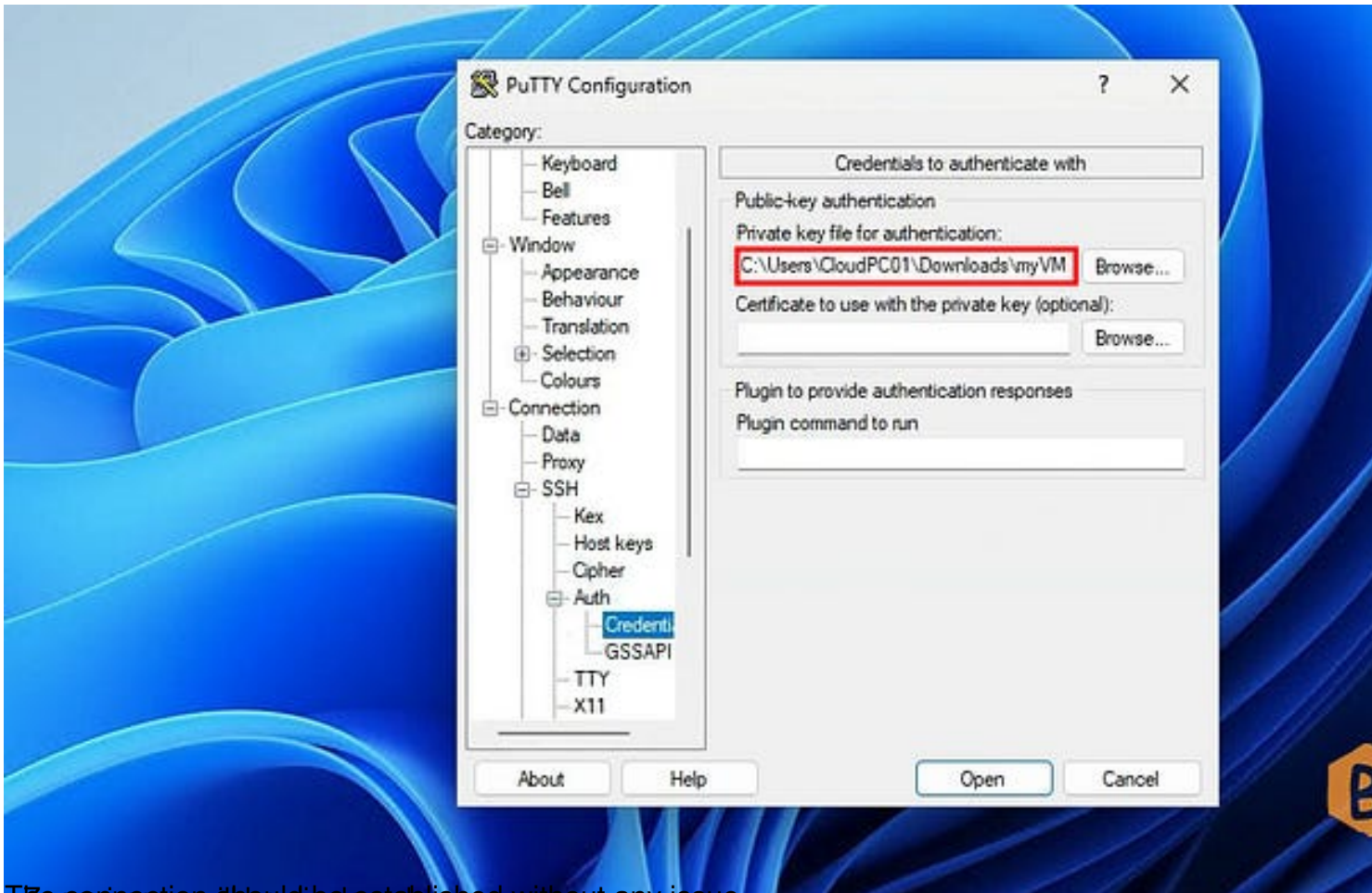


2025/07/26 08:46:00 PuTTY for a PuTTY displayed the private key as a certificate from OpenSSH format to the PuTTY format.

Unable to Use Key File OpenSSH SSH-2 Private Key (Old PEM Format)

Written by BiRU

Saturday, 26 July 2025 08:46 -



The connection should be established without any issue.

Unable to Use Key File OpenSSH SSH-2 Private Key (Old PEM Format)

Written by BiRU

Saturday, 26 July 2025 08:46 -

azureuser@myVM: ~

```
System information as of Sat Mar 9 04:29:17 UTC 2024
```

```
System load: 0.0          Processes:              125
Usage of /: 6.5% of 28.896B  Users logged in:      0
Memory usage: 3%          IPv4 address for eth0: 10.1.0.4
Swap usage: 0%
```

* Strictly confined Kubernetes makes edge and IoT secure. Learn how MicroK8s just raised the bar for easy, resilient and secure K8s cluster deployment.

<https://ubuntu.com/engage/secure-kubernetes-at-the-edge>

Expanded Security Maintenance for Applications is not enabled.

1 update can be applied immediately.

To see these additional updates run: `apt list --upgradable`

Enable ESM Apps to receive additional future security updates.

See <https://ubuntu.com/esm> or run: `sudo pro status`

New release '22.04.3 LTS' available.

Run 'do-release-upgrade' to upgrade to it.

Last login: Sat Mar 9 04:28:45 2024 from 13.67.92.190

To run a command as administrator (user "root"), use "sudo <command>".

See "man sudo_root" for details.

azureuser@myVM:~\$

<https://youtu.be/watuhXG5194> video tutorial.